



A QUALICO Company

Award Winning

THE ALEXANDRIA IV

Elevation C

Illustrations are artist concepts and may vary.



2 Storey
3 Bedrooms
2 1/2 Bathrooms
1669 sq. ft.

Highlighted Features Include:

- Convenient main floor study and laundry/mud room
- Spacious master bedroom including walk-in closet and ensuite bath with jetted tub
- Optional lower level development plan with 4th bedroom and full bath
- Visitable floor plan
- Many other attractive interior and exterior details

Elevation D



801 Plan

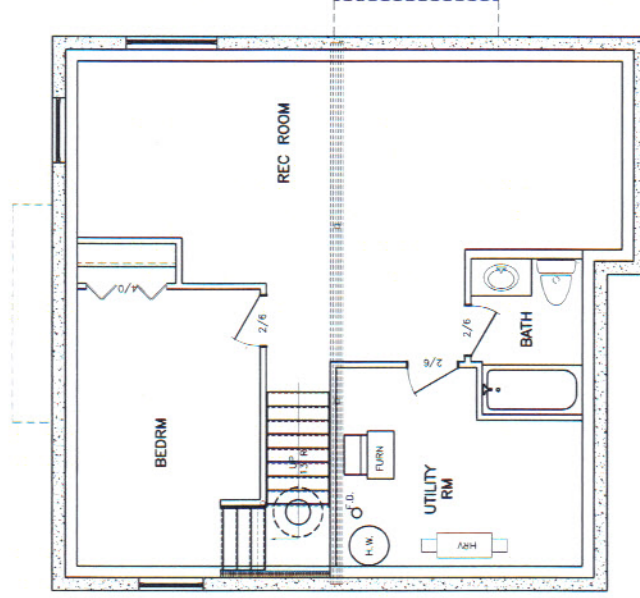
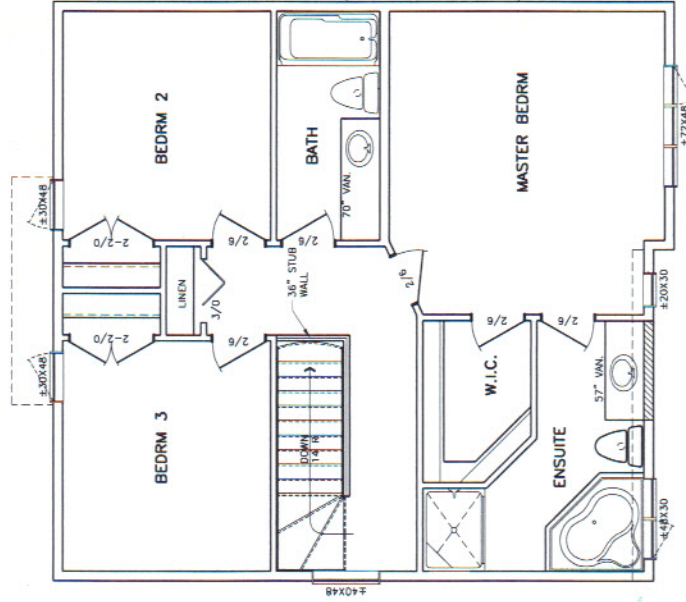
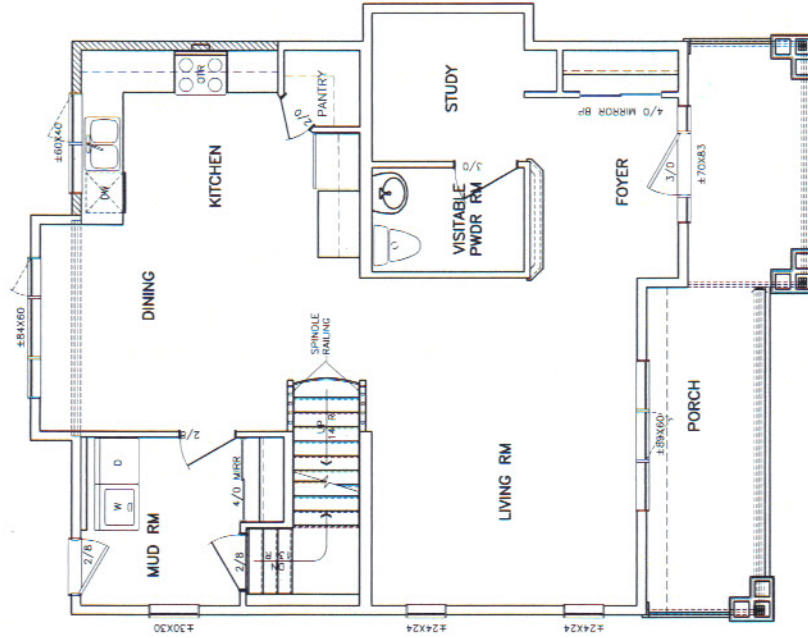


A QUALICO Company

Award Winning

The Alexandria IV

801 Floor Plan



All illustrations are artist's conception and may vary. Room dimensions are approximate. Windows and room sizes may vary with elevations. Mechanical equipment location and placement subject to change as required by building code and at discretion of builder. Furniture outlines for purpose of visualizing room layout only, furniture not included. Kensington Homes reserves the right to change material or specifications without notice.