

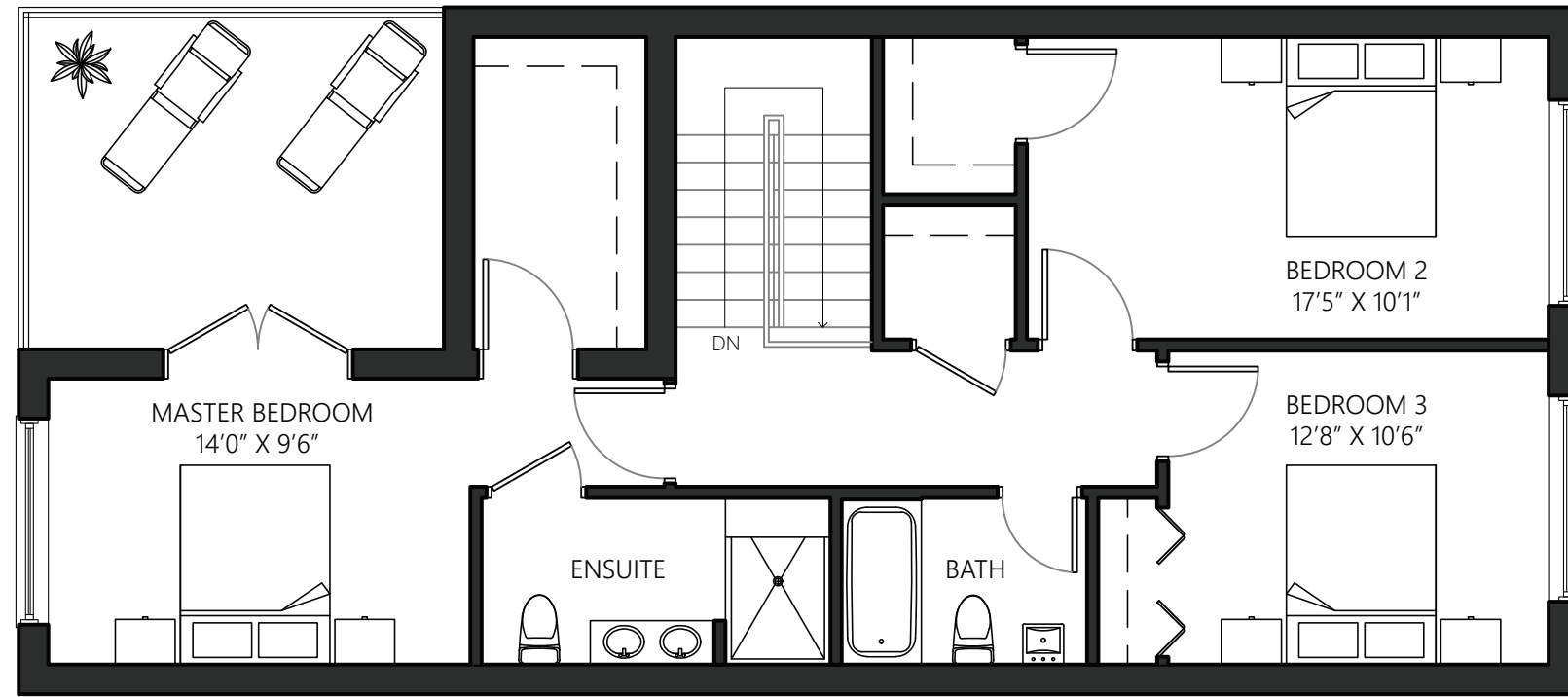
## VISITABLE TOWNHOUSE SEMI-ACCESSIBLE CONFIGURATION

With the growing demand in multi-unit housing due to land prices and municipal policies promoting intensification, both townhomes and stacked towns are growing in popularity for both builders and buyers.

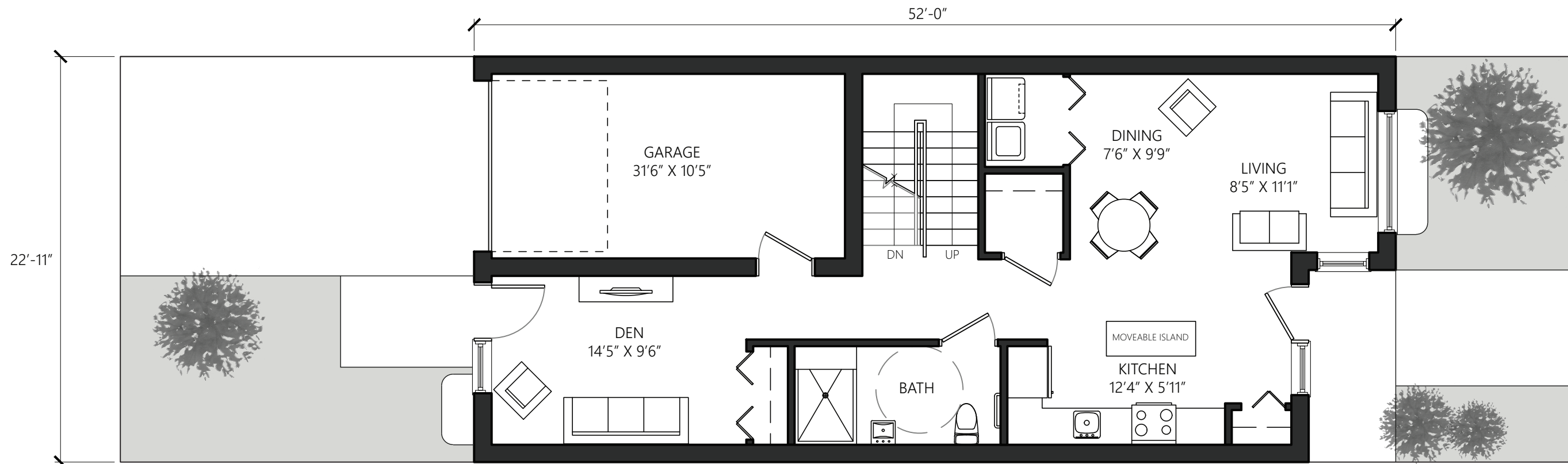
However, these housing types present challenges from an accessibility perspective. The limited size of typical floor plates makes it challenging to incorporate the necessary areas (i.e. bedrooms on the main floor) for residents to "age in place." Most homes are exempt from barrier-free design in the building code.

With an increasing demand in these housing typologies, it is important to consider housing design that is accessible to all.

This layout shows a market-friendly townhouse that can easily adapt to its residents' changing needs overtime. This is possible by the inclusion of key features such as stacked closets that could be converted to an elevator in the future, a moveable kitchen island and a den on the main level that could be converted into a bedroom.



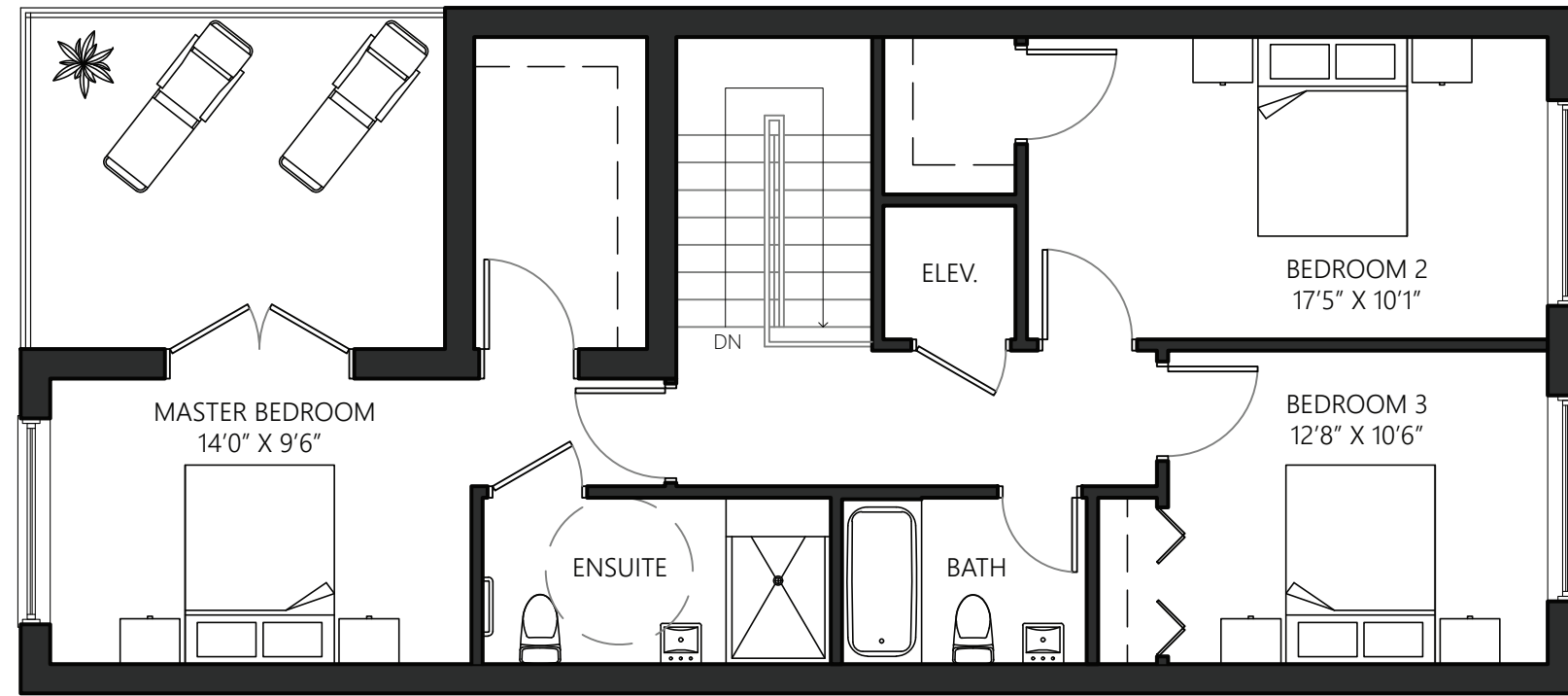
SECOND FLOOR  
1:75



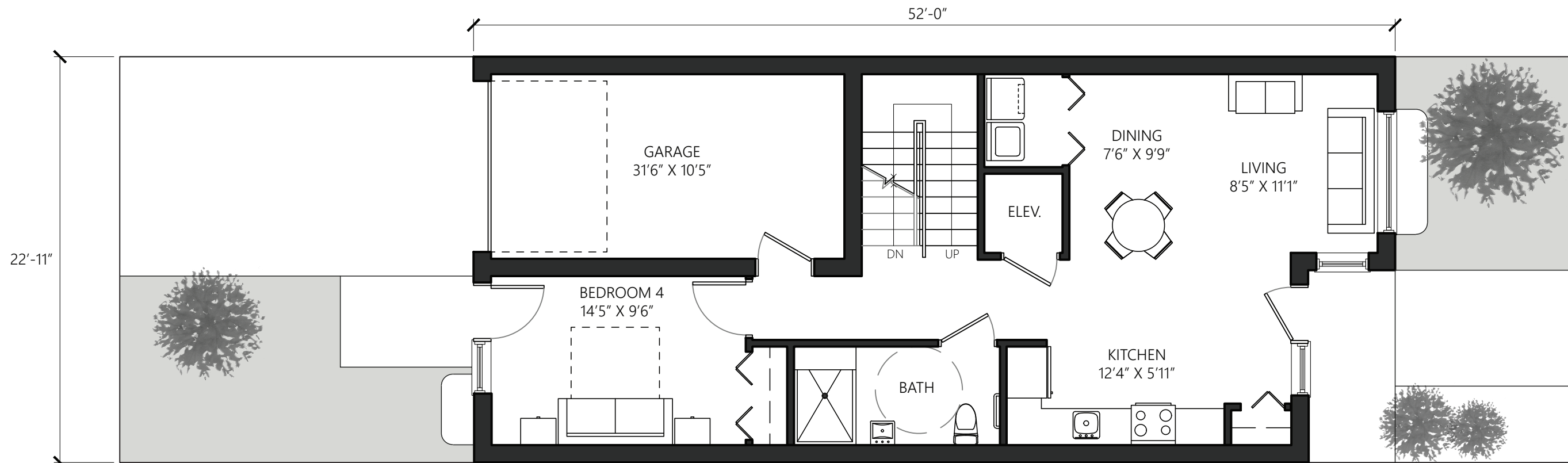
GROUND FLOOR  
1:75

**VISITABLE TOWNHOUSE**  
**FULLY ACCESSIBLE CONFIGURATION**

This layout shows a market-friendly townhouse that has been adapted for residents with mobility issues. An elevator allows for every level of this townhouse to be fully accessible. This includes at least one barrier-free washroom on each level, as well as the basic features of a no-step entrance, wider doorways and a barrier-free path of travel throughout the space.

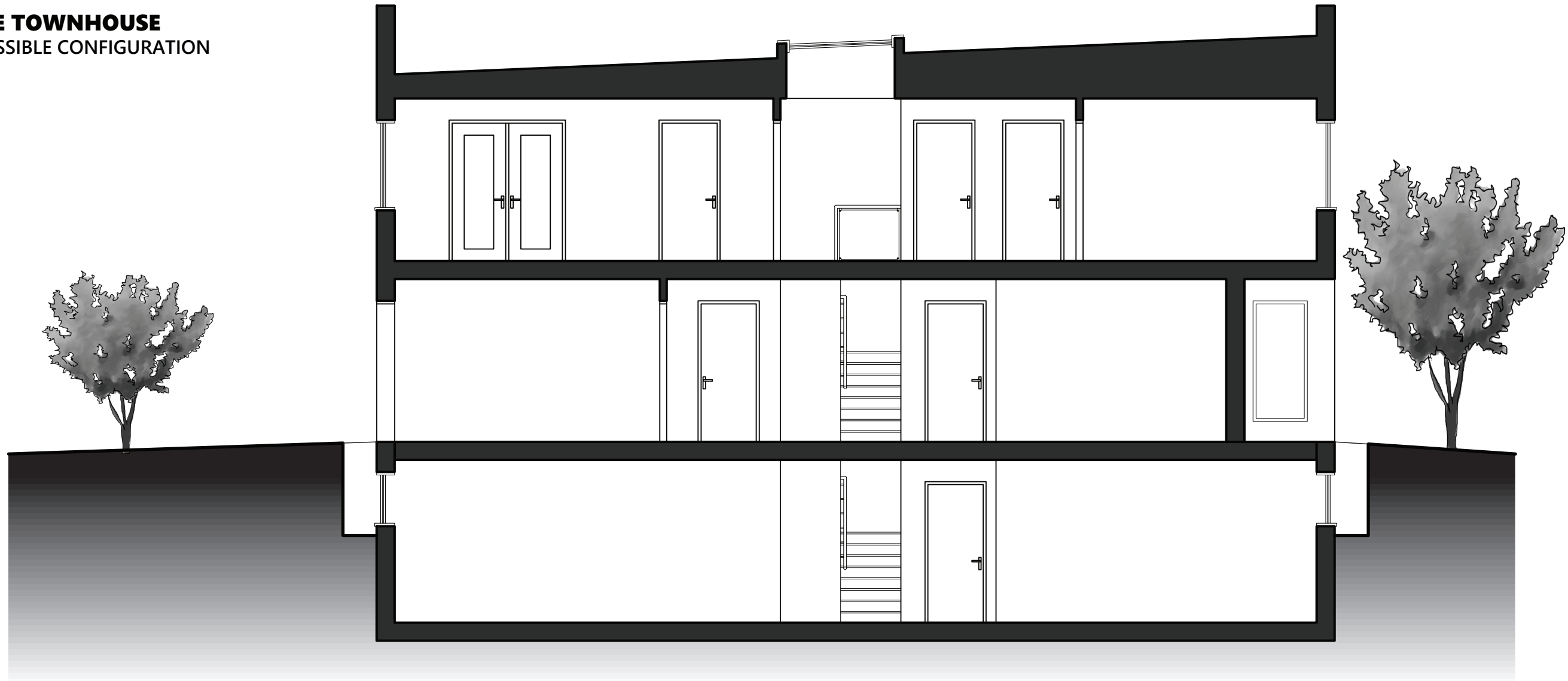


**SECOND FLOOR**  
 1:75

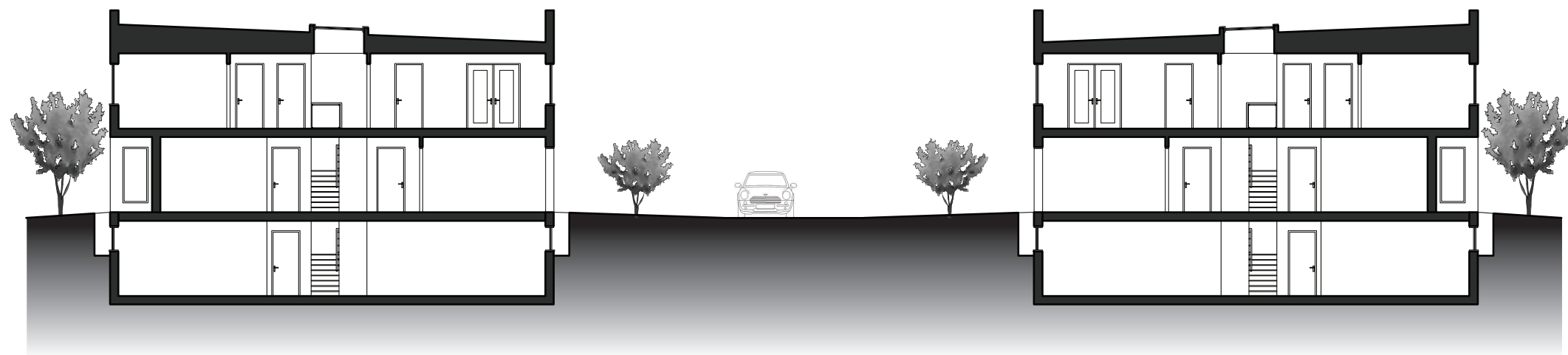


**GROUND FLOOR**  
 1:75

**VISITABLE TOWNHOUSE**  
FULLY ACCESSIBLE CONFIGURATION



SECTION  
1:75



SECTION THROUGH SITE  
1:200

**VISITABLE TOWNHOUSE**  
FULLY ACCESSIBLE CONFIGURATION



SITE PLAN  
1:200